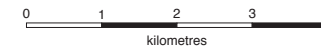


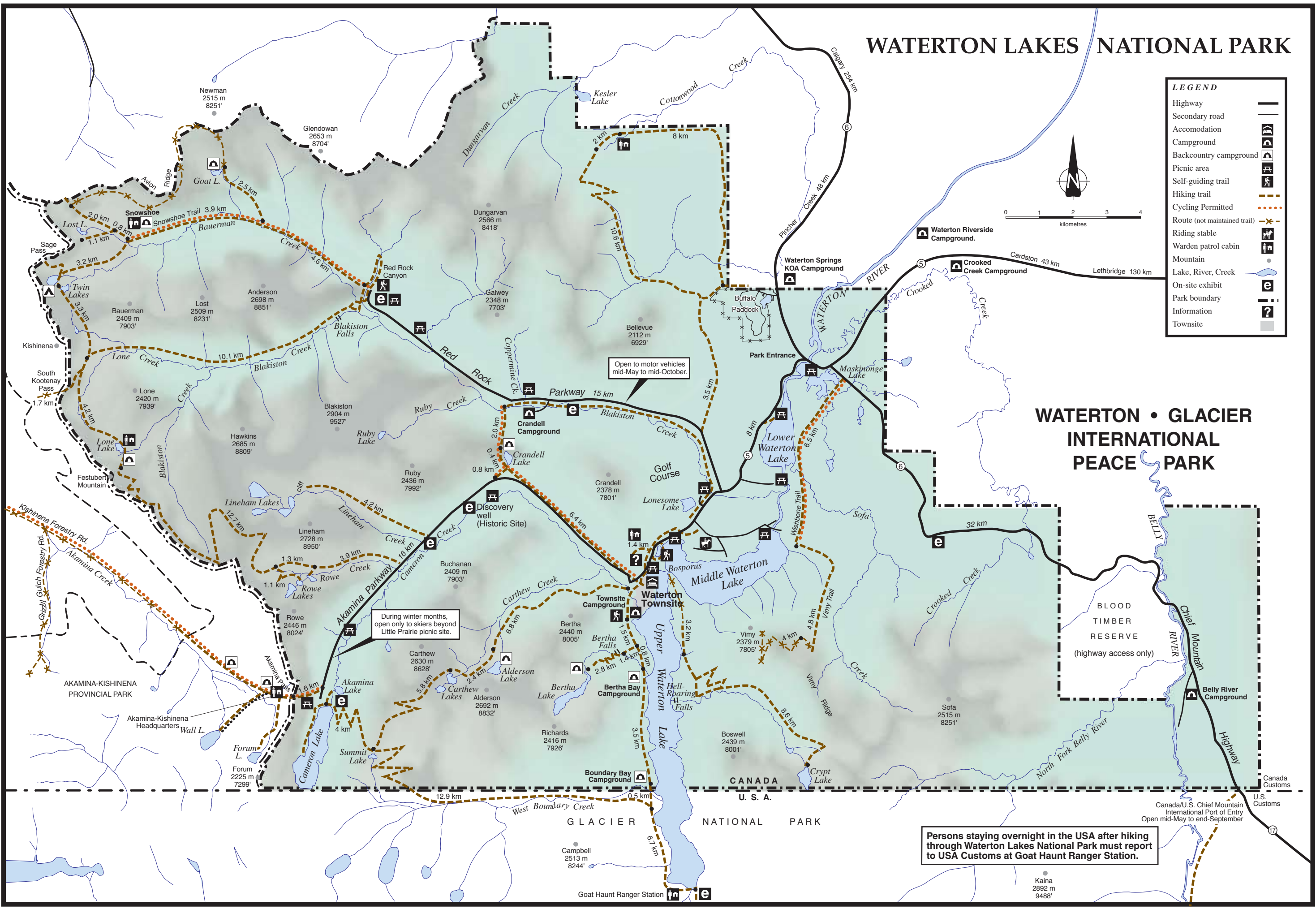
# WATERTON LAKES NATIONAL PARK

## LEGEND

- Highway
- Secondary road
- Accommodation
- Campground
- Backcountry campground
- Picnic area
- Self-guiding trail
- Hiking trail
- Cycling Permitted
- Route (not maintained trail)
- Riding stable
- Warden patrol cabin
- Mountain
- Lake, River, Creek
- On-site exhibit
- Park boundary
- Information
- Townsite



# WATERTON • GLACIER INTERNATIONAL PEACE PARK



Open to motor vehicles mid-May to mid-October.

During winter months, open only to skiers beyond Little Prairie picnic site.

Persons staying overnight in the USA after hiking through Waterton Lakes National Park must report to USA Customs at Goat Haunt Ranger Station.

Canada/U.S. Chief Mountain International Port of Entry  
Open mid-May to end-September

Kaina  
2892 m  
9488'

Goat Haunt Ranger Station